



XTRACT 2006

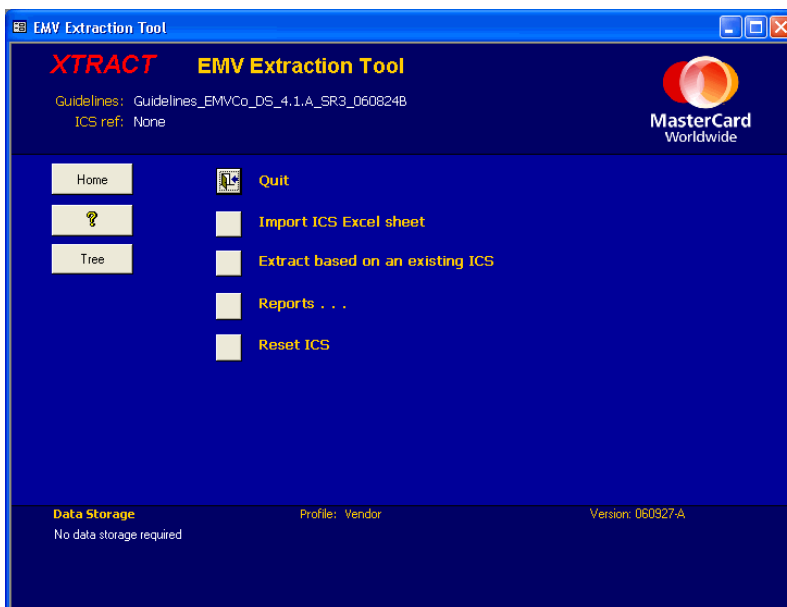
The EVAL optimizer tool

Purpose of XTRACT

- XTRACT optimizes user intervention during Level 2 debugging and Type Approval sessions to save you time. By creating dynamic lists of applicable tests, XTRACT can be used to chain the execution of the test scripts automatically.

Description of XTRACT

- As part of EVAL Test Suite, XTRACT is complementary software of EVAL Test Platform. XTRACT is used to determine applicable EMV Level 2 test cases based on an Implementation Conformance Statement (ICS).



What XTRACT Offers

- XTRACT provides a list of the EMVCo test cases to be run for a specific terminal, according to its ICS (Implementation Conformance Statement). Consequently, this tool can be used as a compliment to other ICS tools.

- XTRACT is a computerized tool developed with Microsoft Access 2000.

- Silicomp ICS are Microsoft Access database files with a range of functions, including the options supported by the terminal.

- Silicomp's XTRACT pack is composed of 1 CD containing the XTRACT Access files, the ICS Access files & the user manual.

- XTRACT is used in EMVCo accredited laboratories using EVAL Test Platform.

Groupe Silicomp, as a participant in the MasterCard® Vendor Program, is appointed by the MasterCard Chip Center of Excellence to distribute the XTRACT Test Tool used for EMVCo Level 2 certification.

MasterCard.
Vendor Program
2006 Participant

For more information, contact
test_tools@silicomp.com
or visit
<http://smartcard.silicomp.com>